

Redistricting and House District 1

What is redistricting?

The purpose of redistricting is to equalize population among electoral districts after the publication of the United States census indicates population has increased or decreased over the last decade.

How does it work?

The state legislature takes the total population in the state and divides it by the number of districts to get the number that all districts must have in order to be equal. They do this for the Texas House districts, the Texas Senate districts, the State Board of Education districts, and the U.S. Congressional districts.

What was the change in population?

Texas + 4 million

(2010): 25,145,561
(2020): 29,145,505

HD 1 (-896)

(2010): 165,823
(2020): 164,927

$29,145,505 / 150 = 194,303$
House District 1 = 164,927

What was the issue?

Texas grew in population but House District 1 stayed roughly the same, meaning our district needed to grow geographically to pick up more population to be equal with all other House districts in the state.

How did the district change as a result?

House District 1 used to contain Bowie, Franklin, Lamar, and Red River Counties. Under the new redistricting maps, it has now dropped Franklin County and added Cass and Morris Counties.

What does that mean for the voters?

Bowie, Lamar, & Red River Counties: Nothing changes! You still vote in House District 1.
Cass & Morris Counties: You now vote in House District 1, starting with the 2022 Republican Primary.
Franklin County: You now vote in House District 62.

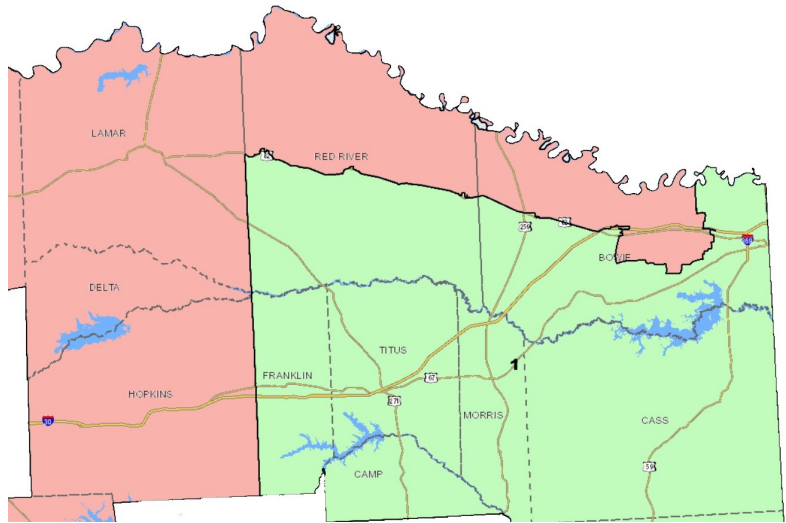
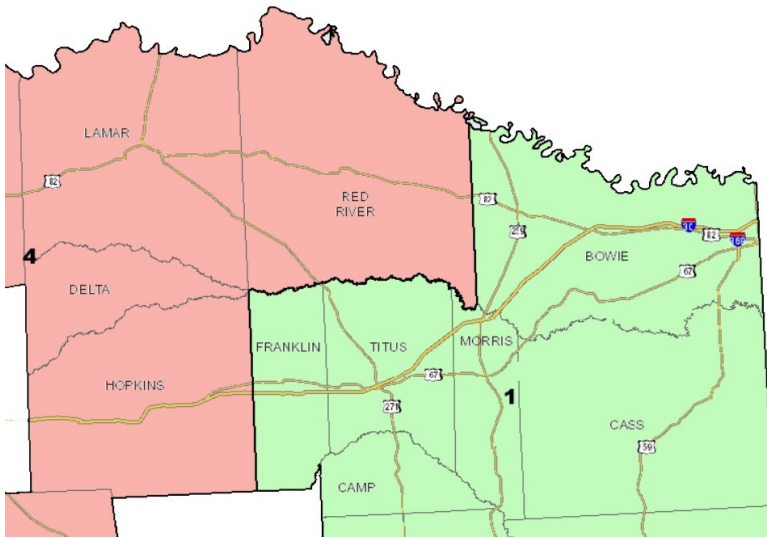
New House District 1



Questions?

Visit my website! www.GaryVanDeaver.com
Follow me on Facebook! @GaryVanDeaverHD1
Email me! GaryVanDeaverCampaign@gmail.com

Redistricting & Congressional House Districts 1 & 4



Original SB 6 as Filed

VanDeaver Amendment

What happened at the federal level?

What happened at the state legislature?

The state that gained the most numerically since the 2010 Census was Texas. In accordance with Title 2 of the U.S. Code, a congressionally defined formula is applied to the apportionment population to distribute the 435 seats in the U.S. House of Representatives among the states. Each member will represent an average of 761,169 people based on the 2020 Census. (Source: U.S. Census Bureau).

The state legislature is responsible for drawing up the maps of the U.S. Congressional districts. A map was drawn up in which Congressional District 4 was split between two districts, District 1 and District 4. My office received a lot of messages asking for the split to be rectified. Due to where the population centers are in the region, however, and the geography of the surrounding districts, it was impossible to keep the original district whole. However, we were able to amend S.B. 6 (87th, 3rd Called Session) successfully, in order to draw the Red River Army Depot and some of Bowie County back into Congressional District 4.

Good news for Texas!

We gained two seats in the U.S. House of Representatives!

Questions?

Handout Sources: *U.S. Census Bureau; Texas Legislative Council; Texas Legislature Online (Capitol TLO).*

Visit my website! www.GaryVanDeaver.com
Follow me on Facebook! @GaryVanDeaverHD1
Email me! GaryVanDeaverCampaign@gmail.com